

FOR SEISMIC AND VIBRATION MONITORING



**SMART
DATA
CENTER**

The smart solution for your vibration measurement projects

SMARTACCESS

Web browser-based access from wherever you are. Set access rights for different user groups to secure your data. Compatible with Android, Apple iOS and Windows devices.

SMARTADMINISTRATION

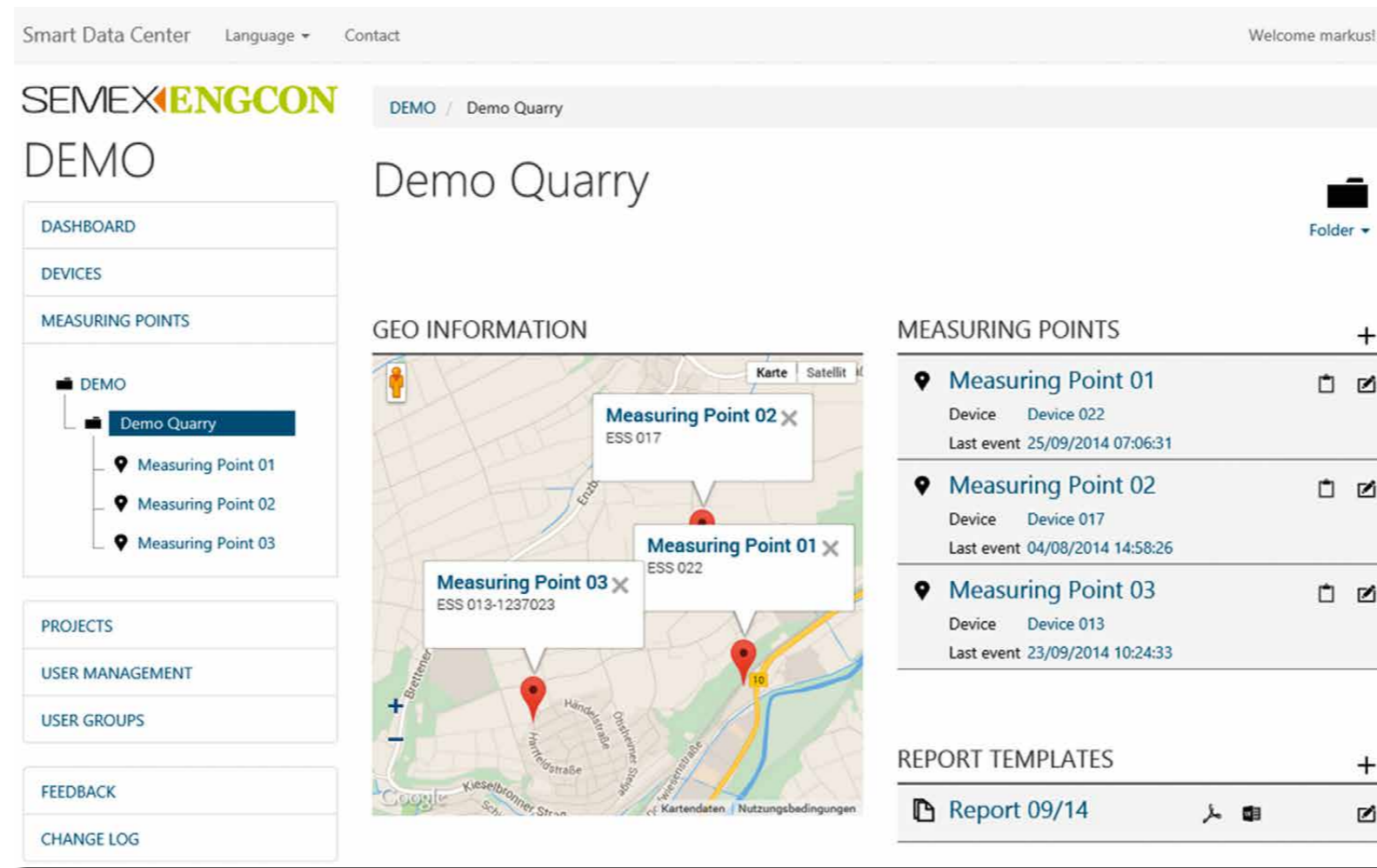
Measurement data is managed according to your measuring points so that you can easily exchange devices at any time without losing track of your data. Measuring points are arranged in folders in order to manage complex scenarios. On top of that you can assign a geo location providing an overview of all your measuring points.

SMARTSUPERVISION

The operability of your measurement network is supervised by Heartbeat Monitor. If a device failed to report data for a user-defined period of time a warning message will be generated and sent via Email or SMS so that you can take action.

SMARTVISUALIZATION

Events and background data can be easily visualized and analyzed at any time in frequency domain as well as in time domain.



SMARTREPORTING

Reports providing all required analysis and assessment results are generated automatically according to your specific requirements. You receive these reports via email.

SMARTARCHIVE

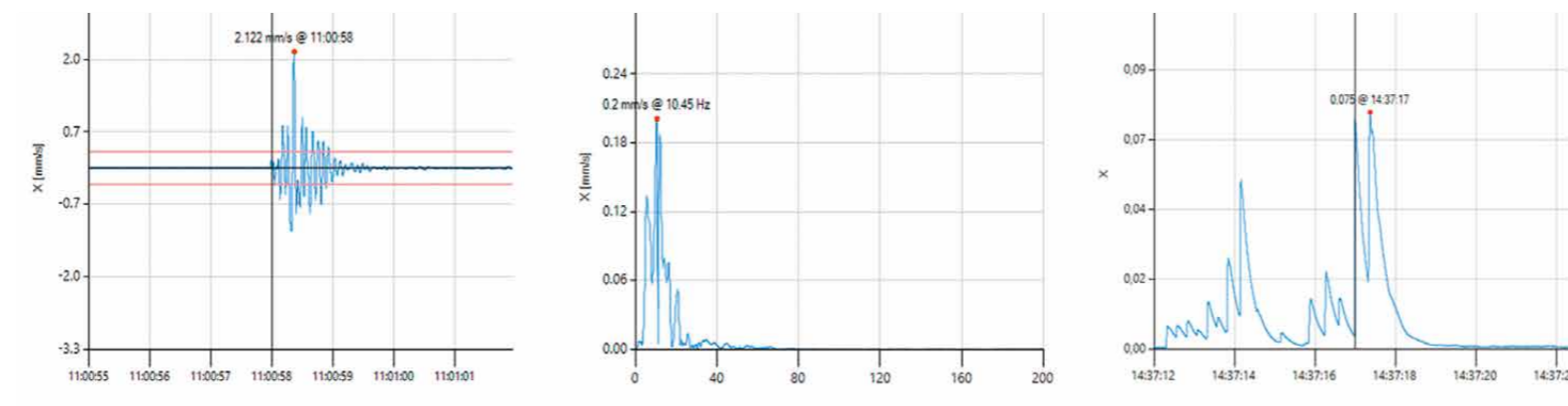
Background and event data is archived automatically. A powerful database structure with backup strategy ensures reliable storage of your valuable data archive and guarantees the accessibility of your measurement results.

SMARTEXPORT

Export your data in the original file format (XMR, BMR) or as CSV data table.

SMARTANALYSIS

Automatic and instant data analysis and classification of vibration measurement data and events. The relevant standards for this assessment are freely configurable to your specific needs and requirements.



Supported standards

- DIN 4150-2
 - DIN 4150-3
 - ÖNORM S 9020
- More standards are introduced as required

HOSTING OPTIONS

- **Full Service Hosting**
Includes hosting, setup, administration, updates, backup, 99,9% reliability
- **Self-Hosting**
SDC is installed on a customer server. Customer is responsible for administration, updates, backup

Minimum hosting requirements:

Windows Server 2008 R2 or above

SQL Server 2008 R2 (All editions) or above

Small projects might use SQL Server Express (max. 10 GB database)

STORAGE

All data stored in a SQL database

Multi project support with one database

Chronological archiving algorithm

Multi client device support

Browser based simple scalable user interface for small and big displays

Multi device manufacturer support

SYSCOM MR3000C

additional can be added on request

Multi language support

German and English, French will follow soon

Multi time zones supported

Data is stored in UTC+0. Support for DST and arbitrary time zones in reports and user interface

CONTACT

For more information on how to benefit from Smart Data Center please get in contact with us:

info@semex-engcon.com

www.semex-engcon.com

+49 7243 5148252