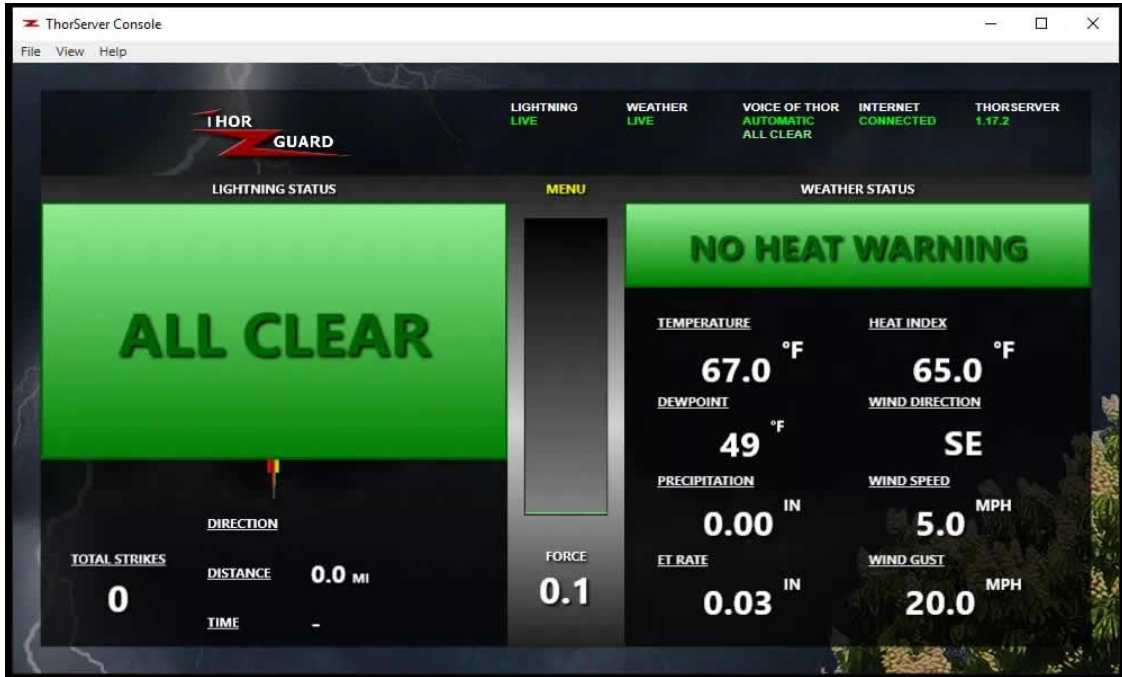
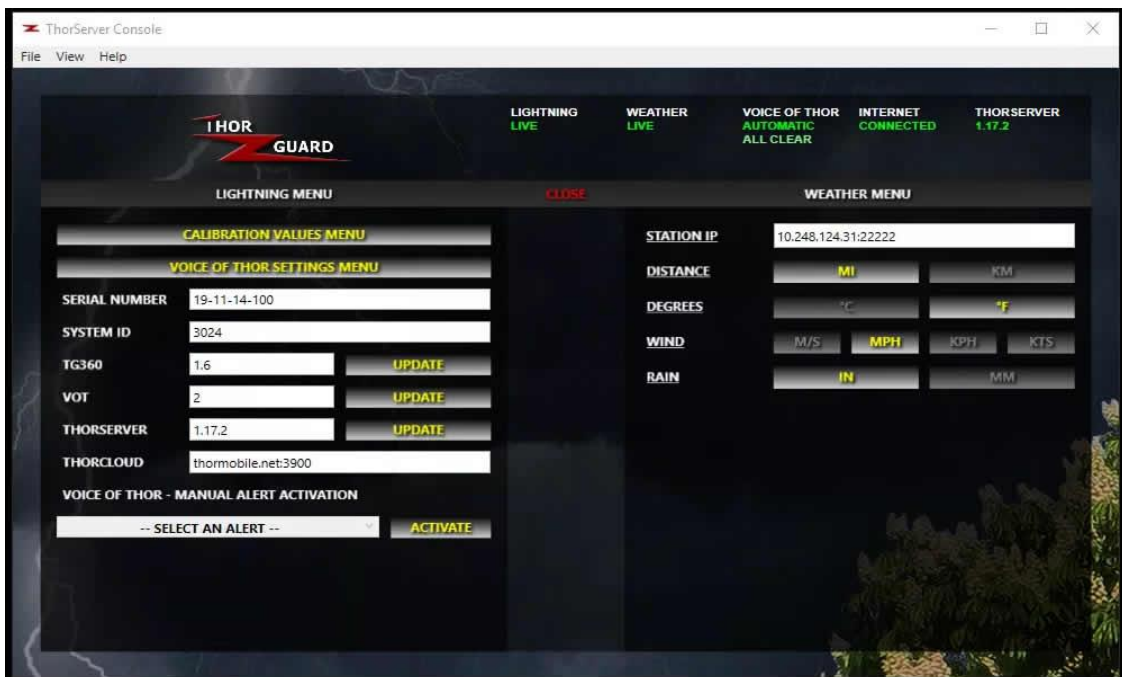


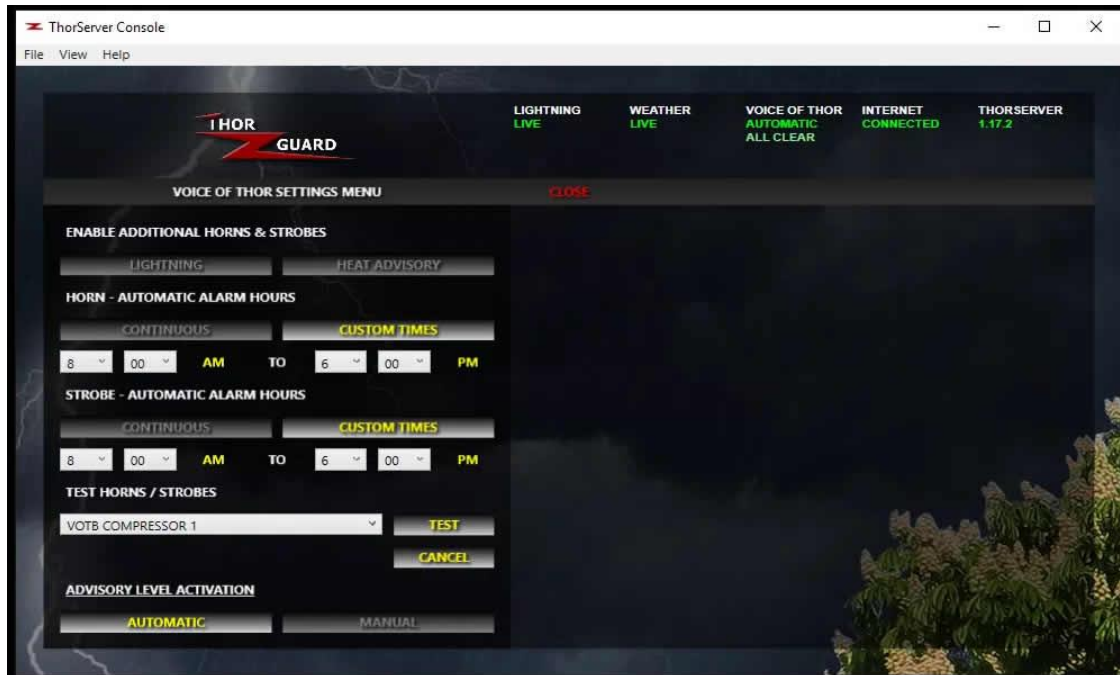


# THORSERVER SOFTWARE



The ThorServer Software is a Windows based service software that handles and processes the TG360 Data coming down from the roof through the provided Edgerouter into the provided laptop. All the necessities are displayed on the main screen and then at first glimpse into the Menu, you'll find more settings and diagnostics for both the Weather Station and the TG360.





## ENABLE ADDITIONAL HORNS & STROBES

**LIGHTNING** - If this is enabled and your TG360 reaches Caution and/or Warning, your horns and extra strobe lights will make an audible and visual alert. Caution is a single 4 second blast, while Warning is two 4 second blasts. You must have multiple strobe lights installed at each horn location to see the strobe lights flash for Caution and Warning.

**HEAT ADVISORY** - If this is enabled and your TG360 reaches Heat Warning 1 and/or Heat Warning 2, your horns and extra strobe lights will make an audible and visual alert. Heat Warning 1 is a single 4 second blast, while Heat Warning 2 is two 4 second blasts. You must have multiple strobe lights installed at each horn location to see the strobe lights flash for Heat Warning 1 and Heat Warning 2.

## HORN / STROBE AUTOMATIC ALARM HOURS

**CONTINUOUS** - Your TG360 system can provide audible and visual alerts at any time of day or night by enabling this mode.

**CUSTOM TIMES** - Use your own custom horn and strobe hours by enabling this mode and choosing the hours you prefer the horns and strobes to be available for activation.

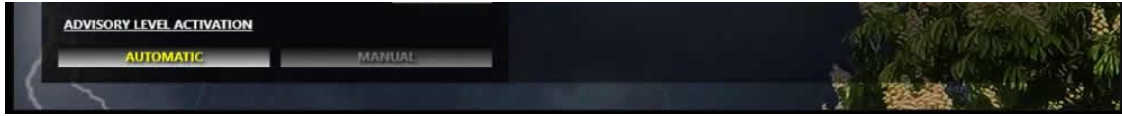
## TEST HORNS / STROBES

This section of the Voice of Thor Settings Menu is for Certified Personnel such as Territory Managers to test the various base/remote horn/strobe procedures.

Click CLOSE to save any and all changes made to this menu.



# THORSERVER SOFTWARE



## ADVISORY LEVEL ACTIVATION

**AUTOMATIC** - This is the default mode of each TG360 system at the bottom of the Voice of Thor Settings Menu.

**MANUAL** - Only use this mode if you are willing to take responsibility for the audible and visual alerts of your TG360 system. If you change your TG360 system into Manual mode, you must click CLOSE in the Voice of Thor Settings Menu to save that adjustment and then go back to the Main Menu for the Manual Alert Activation choices (seen below).

